



INFORMATION

IBM Elevator Company was established in 2013 based on sufficient knowledge and experience in the field of elevator and escalator industry. The company has taken a strong step towards improving the quality level and also competing with its other competitors by using experienced and experienced technical forces and using the latest world knowledge in this field.

We hope that, thanks to God and the efforts of the IBM team, we will be able to take a positive step in this field and offer the best that our dear customers deserve in this industry.

info@ibmlift.com



IBM COMPANY

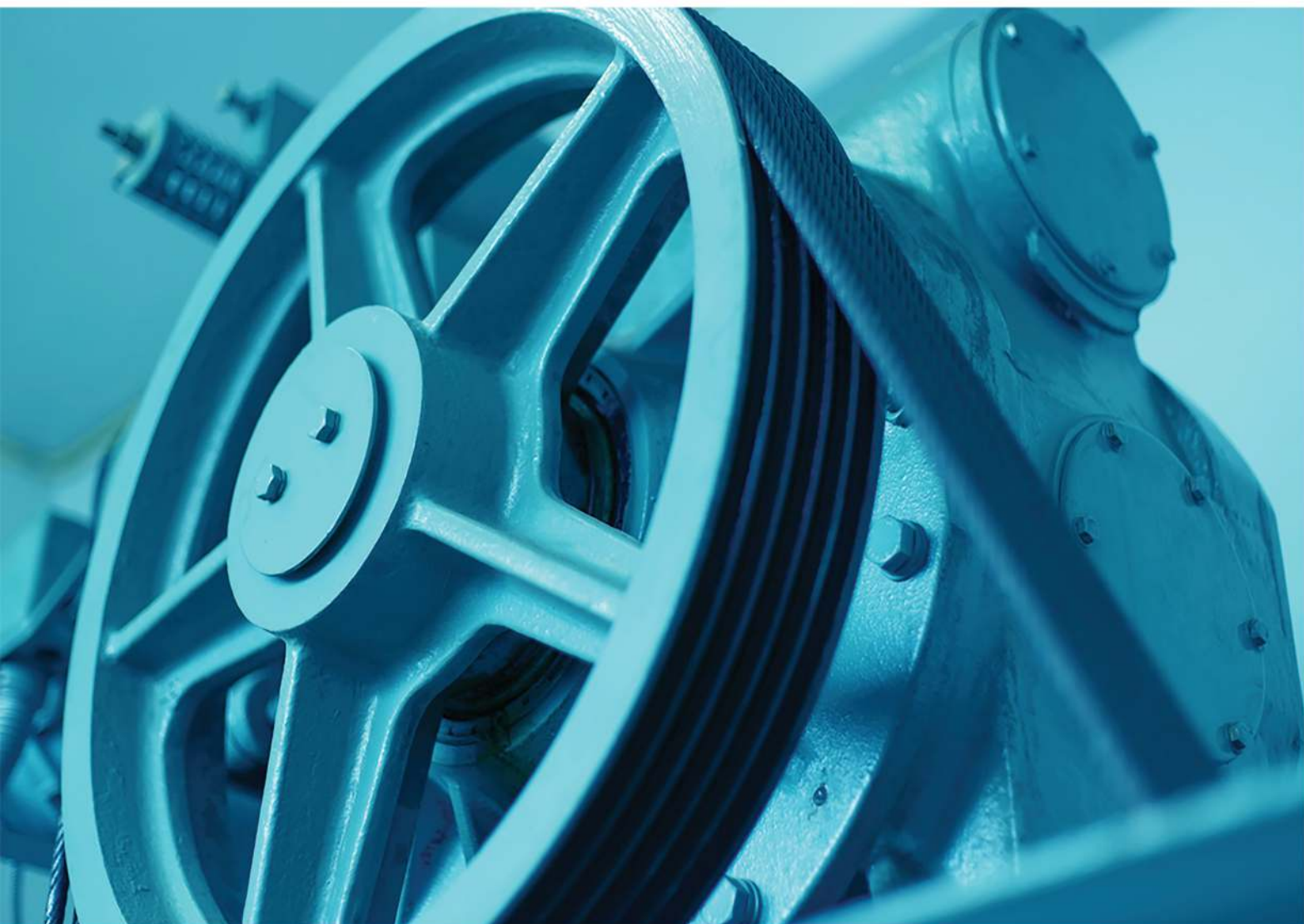
ELEVATOR AND ESCALATOR

GEARBOX TRACTION MACHINE

Gearbox machine are the oldest and most basic systems in the industry. This type of motor consists of an electric motor and a gearbox.

This type of motor has more volume due to the gearbox and naturally has more depreciation and relatively low efficiency.

Gearbox machine have more output power and as a result its power consumption is higher. This type of motor requires gearbox lubrication and can not be used for high speeds. In this type of machin, due to the presence of gears and conversion and reduction of speed by the gearbox, smooth movement can not be seen.



 ALBERTO
SASSI



ALBERTO SASSI

We have been producing geared machines for lifts and goods-lifts for over 70 years.

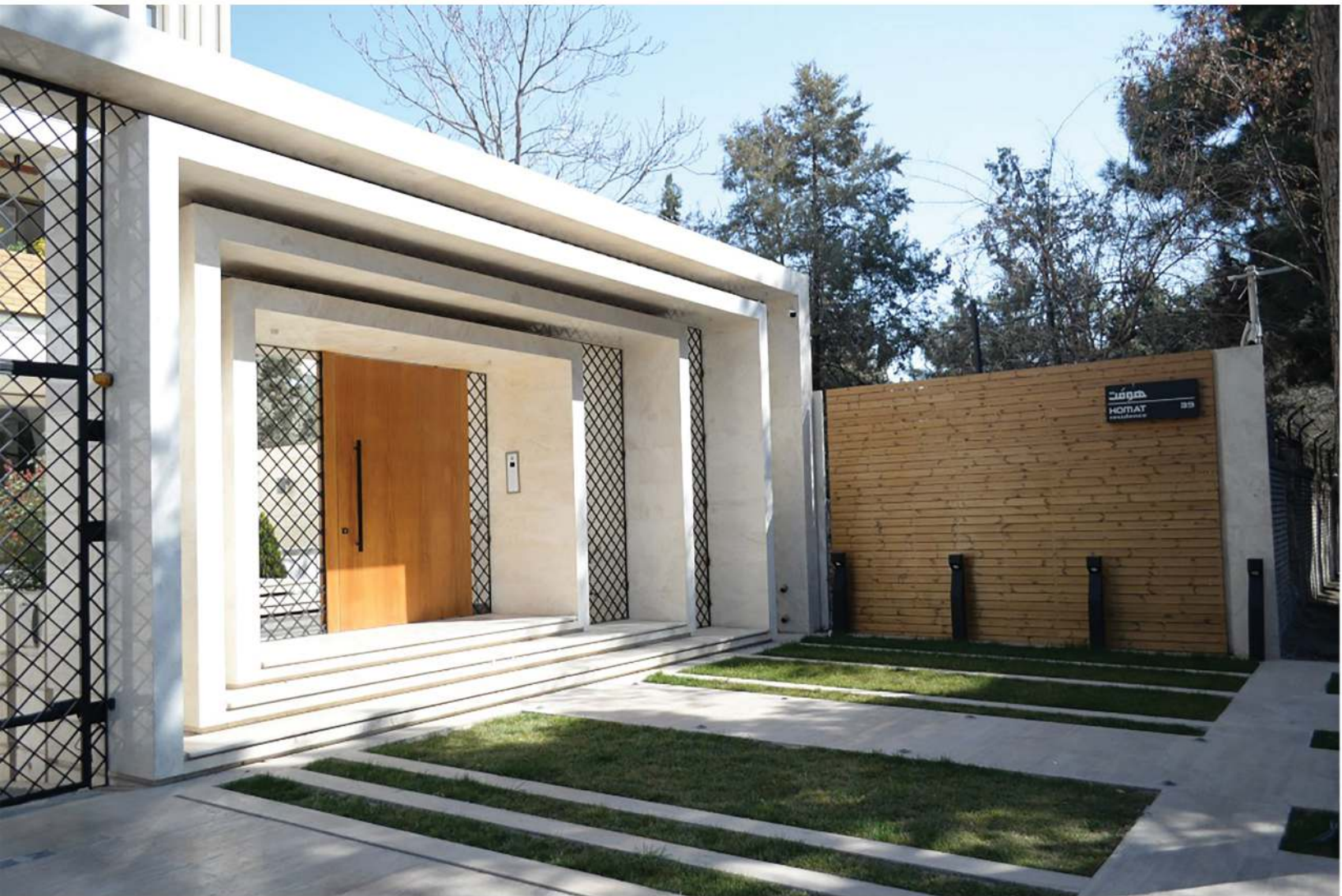
Our gearboxes are appreciated everywhere in the world where reliability and technology are required.

Our experience and our Technical Team have allowed us to develop every component of the machine: gearbox, motor and brake.

This guarantees assistance and control over everything.

All geared machines comply with the safety standards required by the EN-81 in force.





QUALITY AND BEAUTY

IBM Elevator has tried to use the best parts in all its projects and while maintaining trust, it has taken an effective step in raising the quality and appearance level in the construction industry. This has led to well-known manufacturers making IBM their first choice

Quality and beauty are important issues in this industry.



SICOR

Sicor, five letters, a unique story going through the decades and travelling towards the future.

It was 1981, in fact, when the ambitious project became tangible matter: what had previously been imagined on paper, became a real business!

A company thought of in a different way, set up in a strategic territory: head-quartered in Rovereto, in the north-eastern Italian province of Trento, sheltered by the Alps, located within a few dozen miles away from the Austrian border.....an Italian brand with sheer determination to succeed abroad.

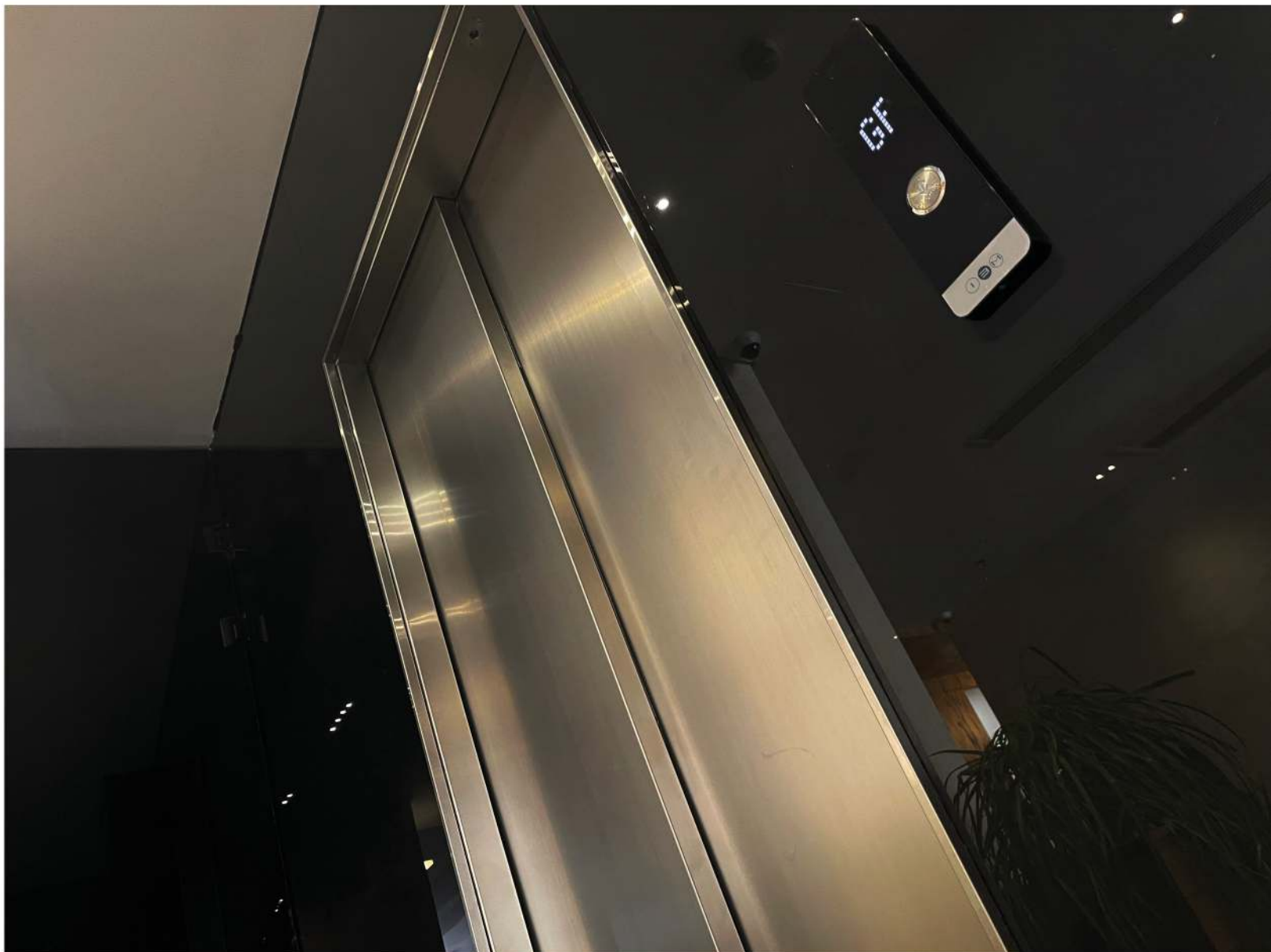
With this view, SICOR supplies a wide range of traditional gearboxes, as well as gear-less motors for elevators, designed to provide safe, technically advanced solutions for any type of lifting platforms.



INNOVATION

Innovation is one of IBM's enduring goals. A combination of glass and steel is less commonly seen in residential spaces. IBM has taken this big step with the tact of its engineers and examining all aspects, the output of which can be seen with all its beauty.

Innovation is never easy without the efforts of IBM's tasteful engineers.



OTHER GEARBOX TRACTION MACHIN

As mentioned, many reputable companies in the world play an important role in the production of gearbox machine, including Albertosassi and Sicor, both of which are made in Italy, but other countries besides Italy, such as Spain and Turkey. They have started to produce quality elevator motors. Below we introduce several other reputable brands of elevator motors.



GEARLESS TRACTION MACHIN

Gearless motors become the new generation of elevator motors. This type of machine is made by removing the gearbox, in addition to reducing the volume of the machine and increasing its efficiency, as well as reducing the depreciation of the gearbox, a great help to the amount of power consumption and power output of the machine. This type of machine can be designed for speeds above 2 meters per second and also has a very smooth motion. The gearbox has been removed in this type of machine so that it is easier to service and maintain and there is no need for lubrication. The new generation of gearless motors can be used for MRL elevators.





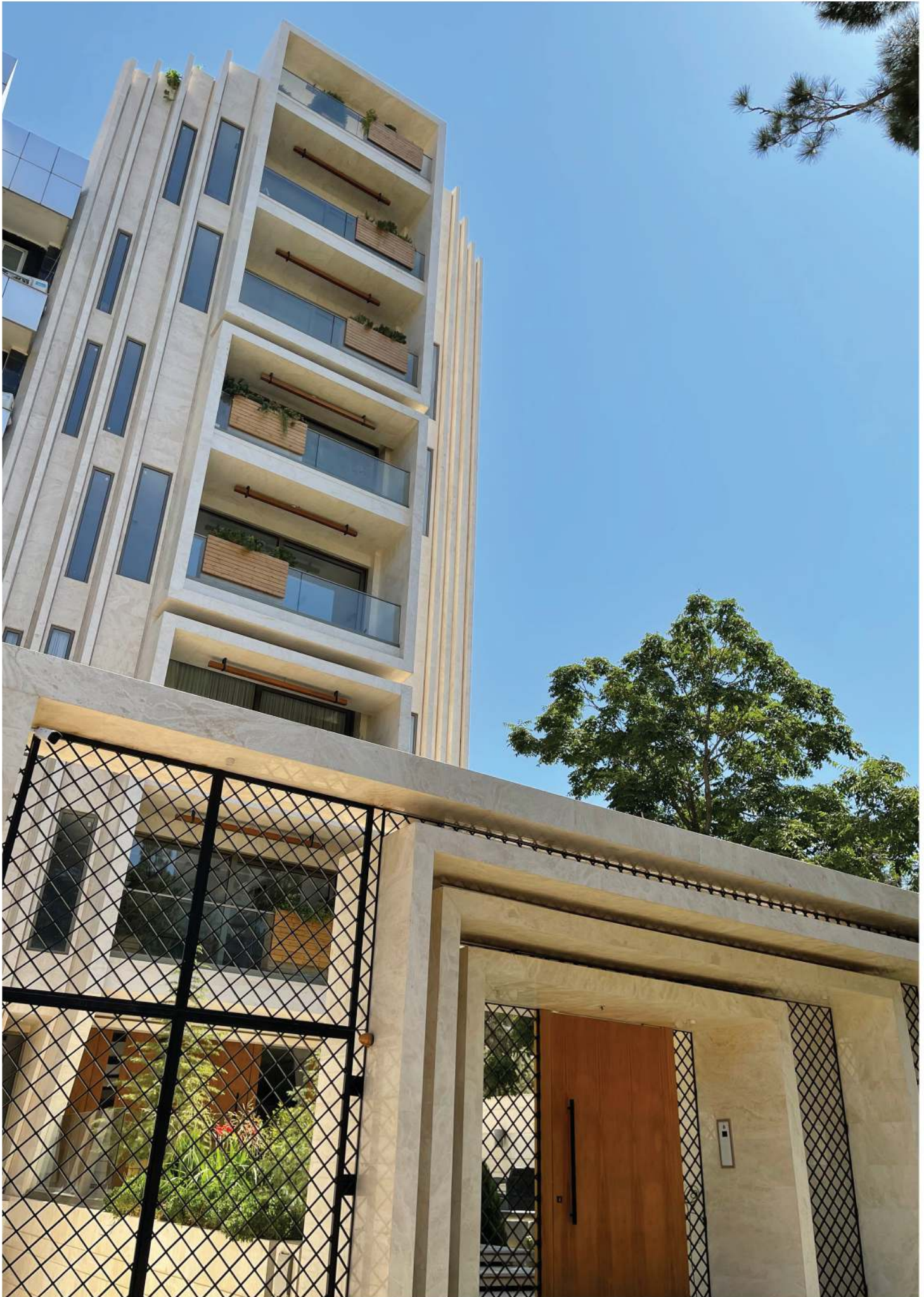
WITTUR



WITTUR GEARLESS TRACTION MACHINE

The Wittur Group, with the operating entity Wittur Holding GmbH, is a worldwide leading producer and supplier of elevator components. Founded 1968 in Germany, the group is today present with various subsidiaries in Europe, Asia and Latin America. The headquarter is located in Wiedenzhausen, between Munich and Augsburg.





Mr.Sartaei
Honarestan St.



UNIQUE DESIGN

IBM has tried to select the simplest and most up-to-date designs for its cars by using experienced engineers in the field of elevator car interior design. The combination of glass and steel is one of the most attractive design ideas in the industry.

ZIEHL-ABEGG 

ZIEHL-ABEGG TRACTION MACHIN

They are the heart and soul of every elevator and must be optimally coordinated so that they harmonize perfectly: motor and control technology. Elevator technology from ZIEHL-ABEGG offers decisive advantages for elevator manufacturers, because our motors can be precisely aligned to the respective requirements. Our elevator technology therefore also covers a wide range of applications - from home elevators that only have to negotiate one or two floors, to elevators with a large load-bearing capacity, high speeds and high lifting heights



ZIEHL-ABEGG 





Mr.Farivar
Banafshe St.



QUALITY IN PROJECT IMPLEMENTATION

Quality execution of a good plan is the best part of any implementing company. IBM has taken a firm step in this direction with a clear understanding of design. The use of various stainless steels in colors that are perfectly suited to the architectural space, doubles the attractiveness of the elevator car.

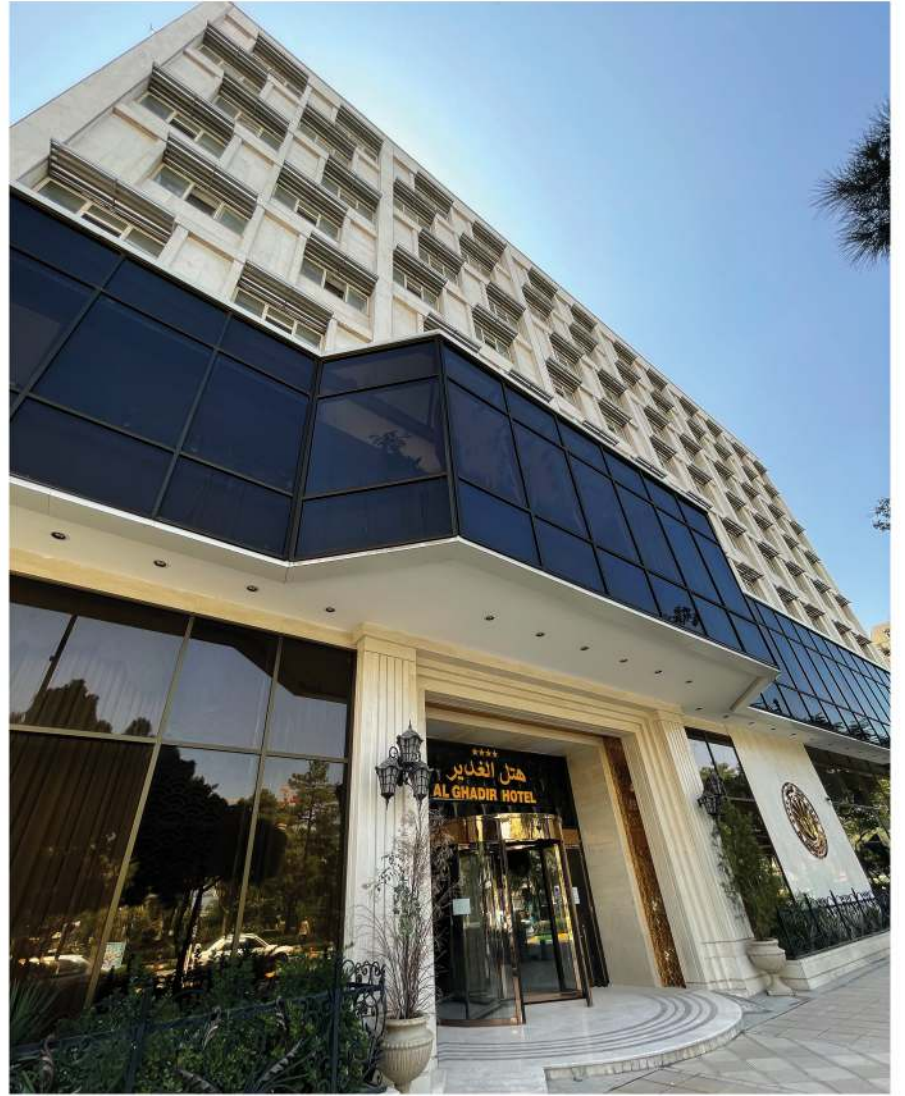
OTHER GEARLESS TRACTION MACHIN

As mentioned, many reputable companies in the world play an important role in the production of gearless machine, including Ziehl-Abegg and wittur, both of which are made in Germany, but other countries besides Germany, such as Italy, Turkey and China has also started producing quality elevator motors. Below we introduce you to several other reputable brands of engines.





HOTEL AL-QADIR
Shohada St.

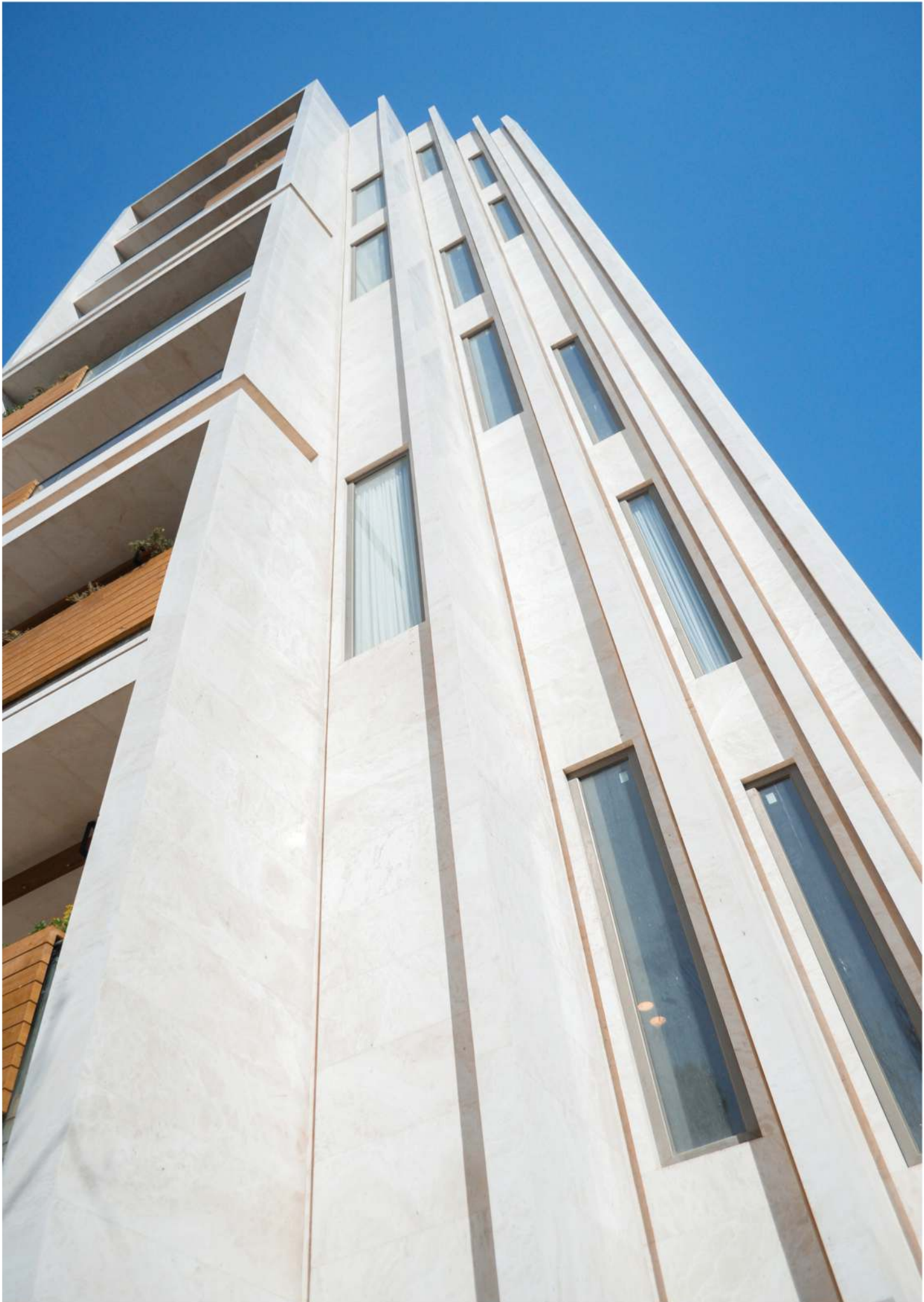


GUIDE RAIL



Guide rails the elevator is one of the most important parts and components. This type of rails with steel alloy determines the movement path of the car. The type of rail and its sections are determined for each project after review by IBM experts. Using the best imported rails and installing them correctly are among the important issues. The rails of Monteferro, Savera and Marazzi companies can be named as the most popular and best rails in the world





Mr.Sartaei
Honarestan St.



MAIN CONTROL SYSTEM

The beating heart of any elevator is its control panel. IBM brings the best output for its elevators by choosing the right parts and using the best parts.

The steering wheel is the most important part of the elevator with control of all parts, including safety, motor speed control, frequency adjustment and correction of possible errors. The use of high quality parts will protect your elevator against frequent breakdowns. IBM has put together the best for the convenience of its customers.

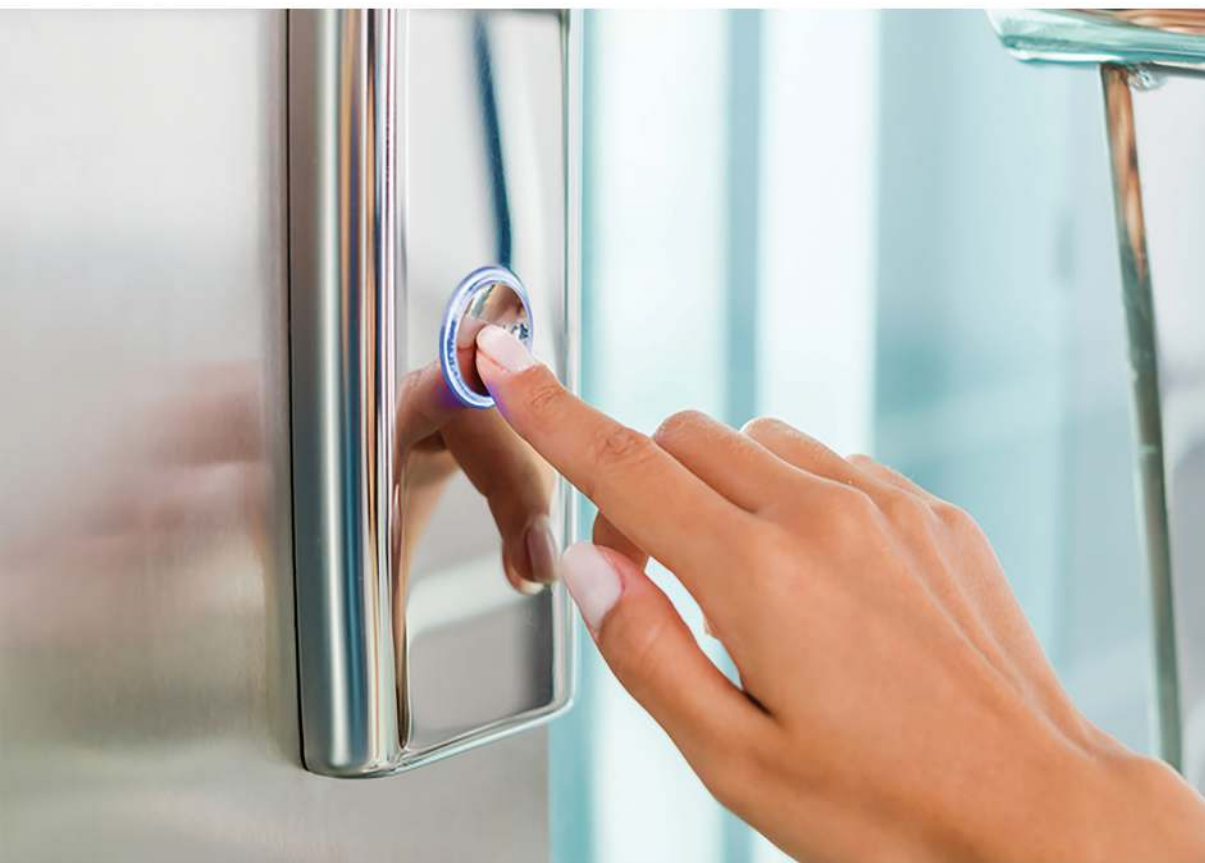
SIMPLE AND BEAUTIFUL

The unique yet simple designs of IBM cars have been an effective step in increasing customer satisfaction. Simplicity is the secret of beauty.



LOP AND COP

The Elevator keys on the floors and inside the cabin in each elevator are important in every way. IBM is always striving to make this important issue easy for its customers by using the best and highest quality parts. The use of the latest and most up-to-date models in the world distinguishes IBM from its competitors. SCHAEFER Germany, VEGGA Italia and BST China are among the world's leading manufacturers of elevator keys.



SCHAEFER  VEGA  BST



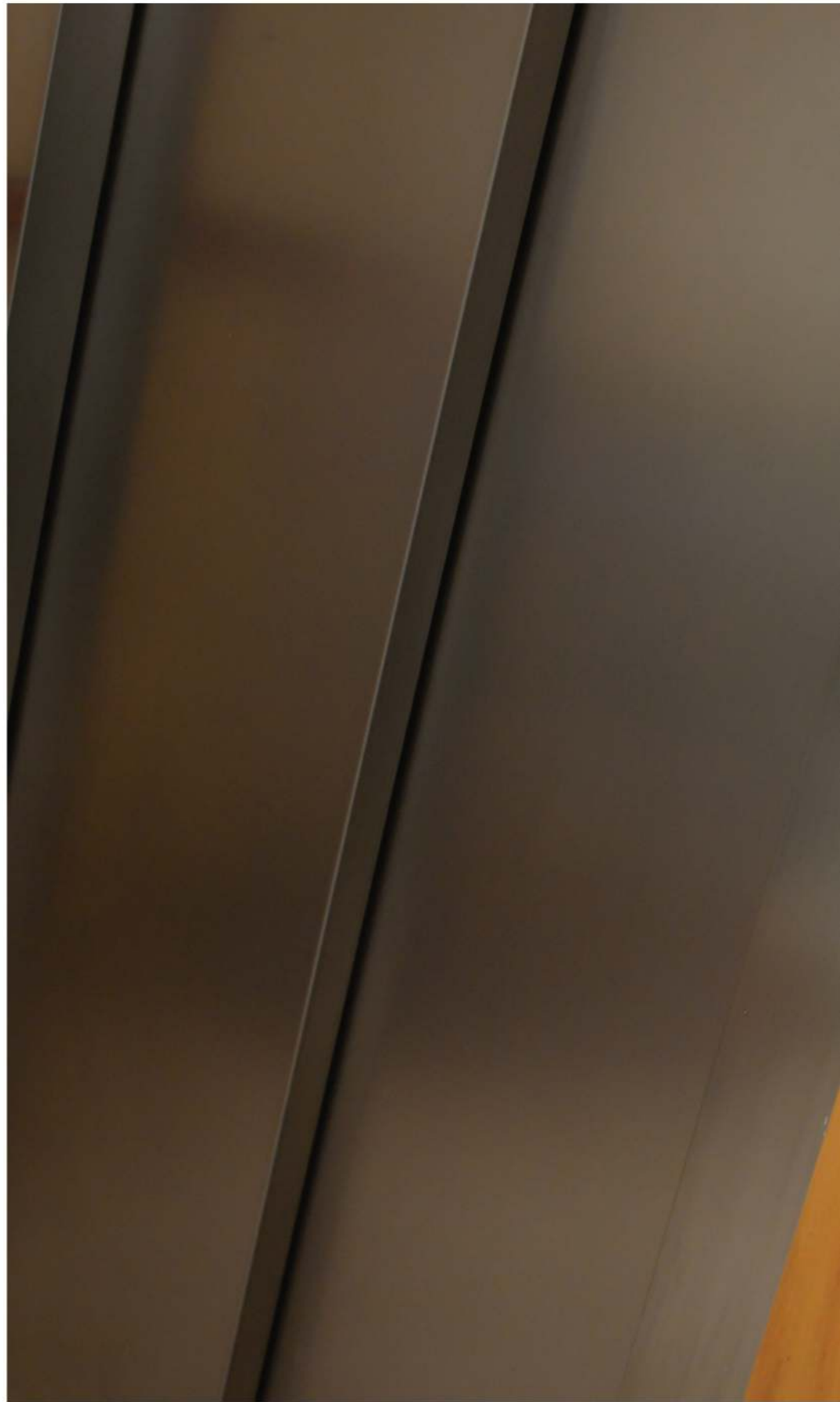
IMPRESSIVE DISPLAYS

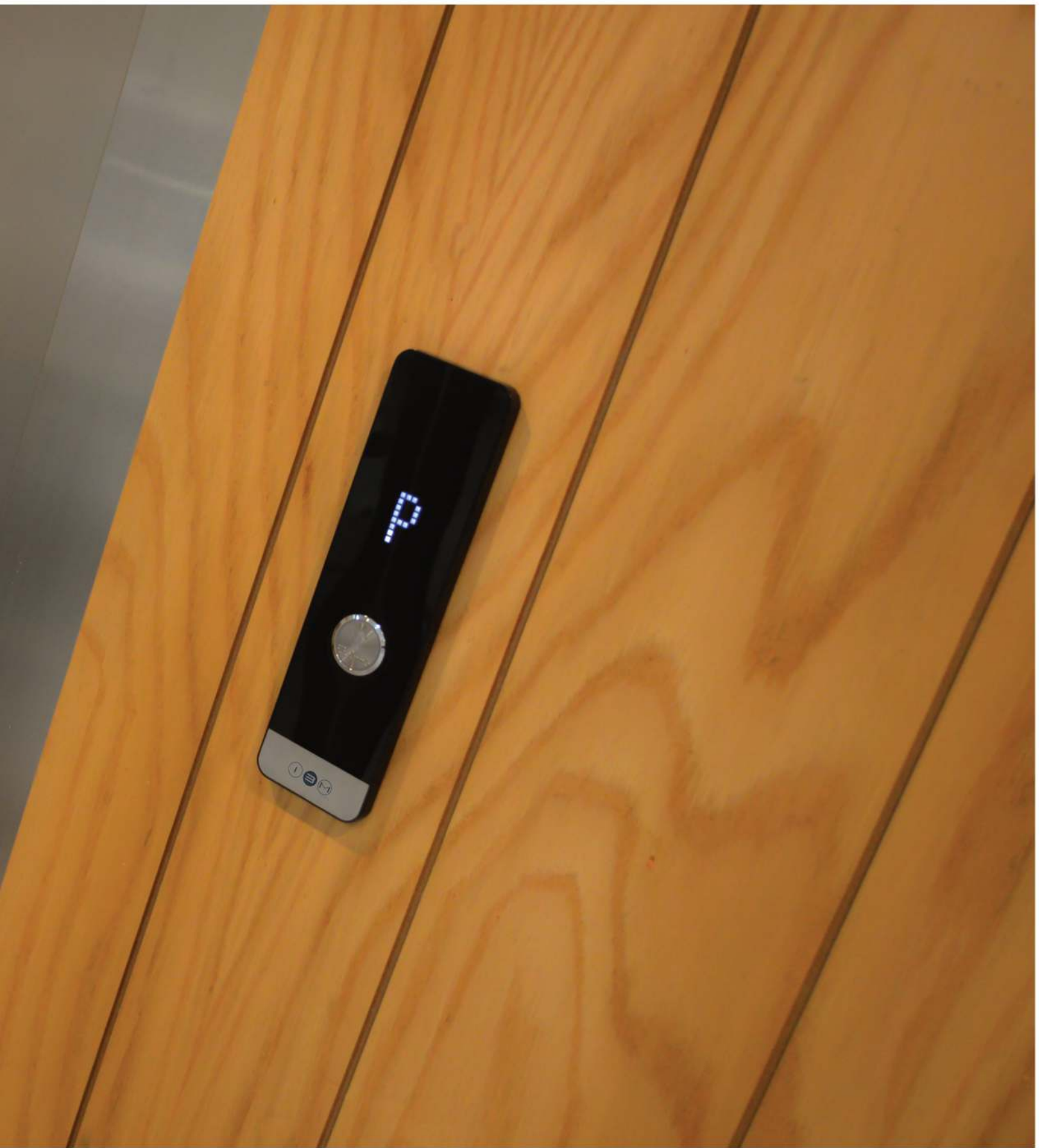
Showing videos and photos and floor orientation is always attractive for passengers in the elevator car. IBM has tried in its designs, while choosing the appropriate dimensions of the screen, in terms of beauty and light color combination of each screen with the interior design of the car. The use of quality parts is the secret of durability.

MODERN AND ATTRACTIVE

Using the latest elevator keys has always been on the agenda of IBM experts and businessmen. Imported samples of BST keys, which is the third largest company in the world in the production of elevator keys, can now be seen in the company's projects.

Everyone loves beauty, simplicity and freshness, and it is important to pay attention to it.







LANDING AND CAR DOOR

The door is one of the most important issues and parts of any elevator. Elevator doors in different dimensions are produced and marketed in different factories around the world.

IBM offers the best choice to its customers while examining the available spaces. Installing the door and assembling it is one of the most important parts of an elevator. IBM has tried to select the best quality door, install it and deliver the best elevators to customers with the least amount of errors.

The Italian companies Selcom, the Spanish fermator, are among the leading companies in the world that are known for making quality doors in the world.



QUALITY IS NOT ACCIDENTAL

IBM uses quality stainless steels and proper installation to increase the quality of output for its customers and greatly increase their satisfaction.

Elegance in installation and high quality are the goals of IBM.

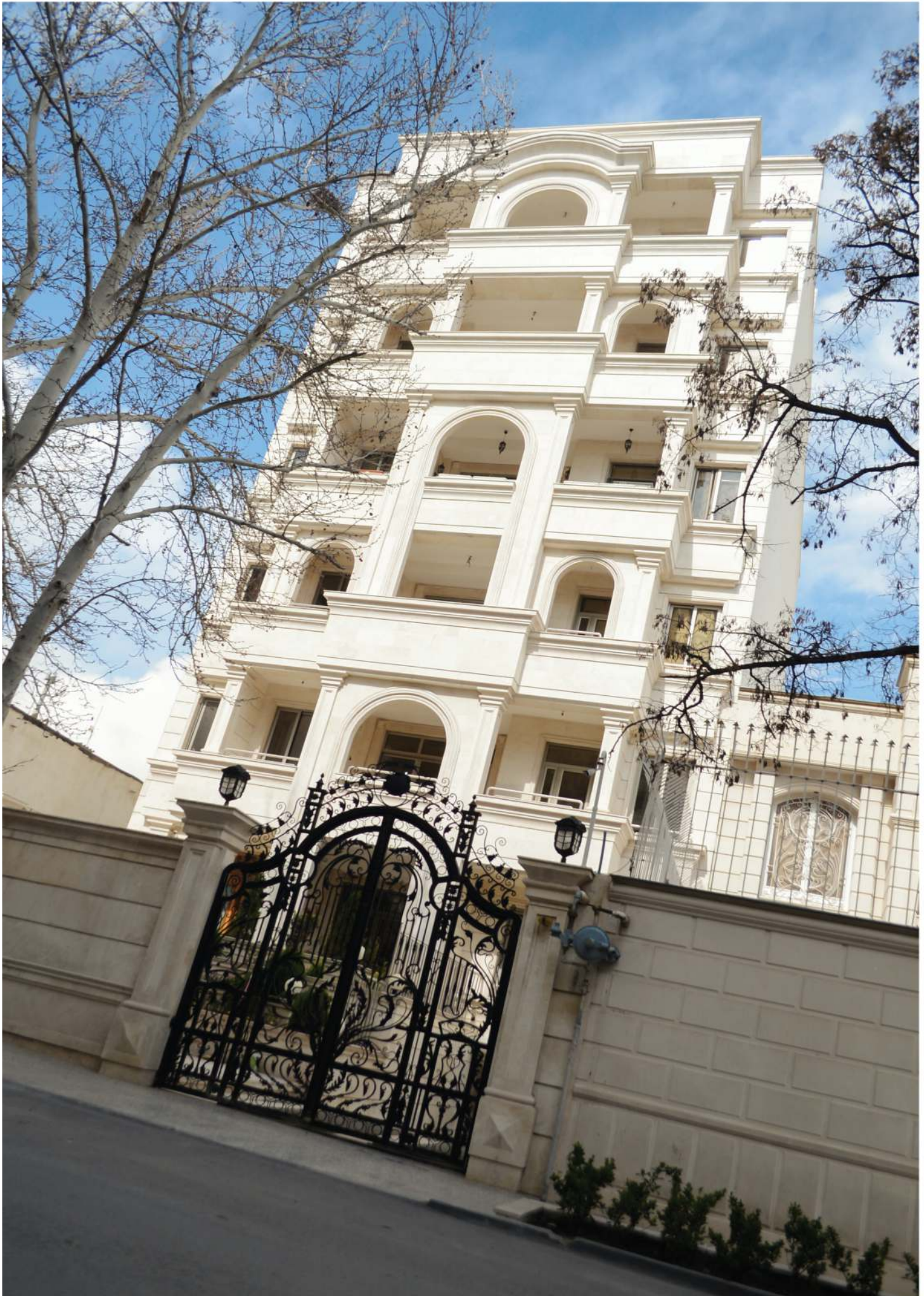


VISION

Elevator is the entrance view of any building. Luxury buildings have tried to pay more attention to this part of the building by using beautiful and unique designs. The elevator is part of this entrance, but it is also very important. IBM is doing its best to make this section as beautiful as possible. We bring beauty to you through the hard work of IBM engineers.







Mr.Nasari
Aboozar St.

DURABLE QUALITY

The choice of stainless steel in specific colors and quality is always on IBM's agenda. Beautiful lighting and quality parts together bring a beautiful effect to IBM cabins.





Mr.Ahmadzade
Modares St.



EXCLUSIVE

The latest elevator keys are on the agenda of luxury residents. IBM always has the most beautiful and high quality ones by its side while respecting the taste of its customers.

Being special makes you different.



DESIGNING

Relying on the knowledge of its experienced and trained engineers, IBM designs its elevators after the initial and final impressions.

Design is one of the most important issues of any elevator and if it is not done properly, its output will not be of good quality.

The use of specialized and sympathetic software of IBM engineers has led us to provide the best design for our customers by careful and engineering review.

TEAMWORK

Teamwork and reflection are the most important topics of IBM. Teamwork increases the efficiency of the work while covering possible defects in the design and execution process, so that errors are minimized and the desired output is included.

The elevator is the effort of several different groups that IBM has tried to bring the highest quality to its customers by bringing together the best groups and creating teamwork.





LIGHT REFLECTIONS

Car designs are always attractive, especially if light reflections are taken into account. IBM provides the best for its customers.

SIMPLE-QUALITY-BEAUTIFUL

Three important principles can be seen in one frame. By respecting these three principles, IBM has been very strict in selecting consumable parts in order to be able to differentiate itself from other competitors.





SYNCHRONIZED WITH ARCHITECTURE

Architects of the construction industry and the hotel industry and its construction, while using the latest methods in the world, try to put the most beautiful together, and this makes us proud that IBM can be one of the best.



INSTALLATION

After design, installation is on the agenda, the use of good parts will never guarantee a good and desirable output. IBM uses its best and most experienced engineers and staff with very high experience in this field to ensure the issue. IBM has tried to take a firm step in the growth and promotion of this quality by eliminating traditional systems of installation and assembly by raising technical knowledge and using the latest science in the world.

Proper installation in accordance with the design will guarantee customer satisfaction.

IBM brings the best for you, dear customers, while being safe during installation.





QUALITY CONTROL(QC)

As we have said, good parts do not guarantee good installation and installation without supervision is not desirable. IBM has tried to have the best output for its elevators with the least amount of error by using quality control experts. IBM experts approve the installation steps by passing technical courses and having quality control points in each stage of installation with very high accuracy and very strictness



In case of fire do not use elevator

1
M
LIFT

1
2
3
4
5
6



Mr.Ahmadzadeh
Kayam 10 St.

SIMPLE - DURABLE

The design of the car, as mentioned, is very important, so the use of appropriate combinations of stainless steel and attractive lighting can make customers feel very good about their building elevator. The combination of a large mirror in the cabin makes the pleasure of using the elevator along the route more attractive for them, while eliminating the feeling of fear and loneliness in the elevator car.



SECURITY SYSTEMS

Today, due to the growth of science and technology, privacy has become more important. This issue has also received a lot of attention in the elevator industry. IBM has taken an effective step in satisfying its customers by using the best parts in terms of security systems and elevator access restrictions.

Elevator limiters are designed and implemented in all types and types with the opinion of customers.

Remember that security systems must work properly or you will have to wait for bad news.



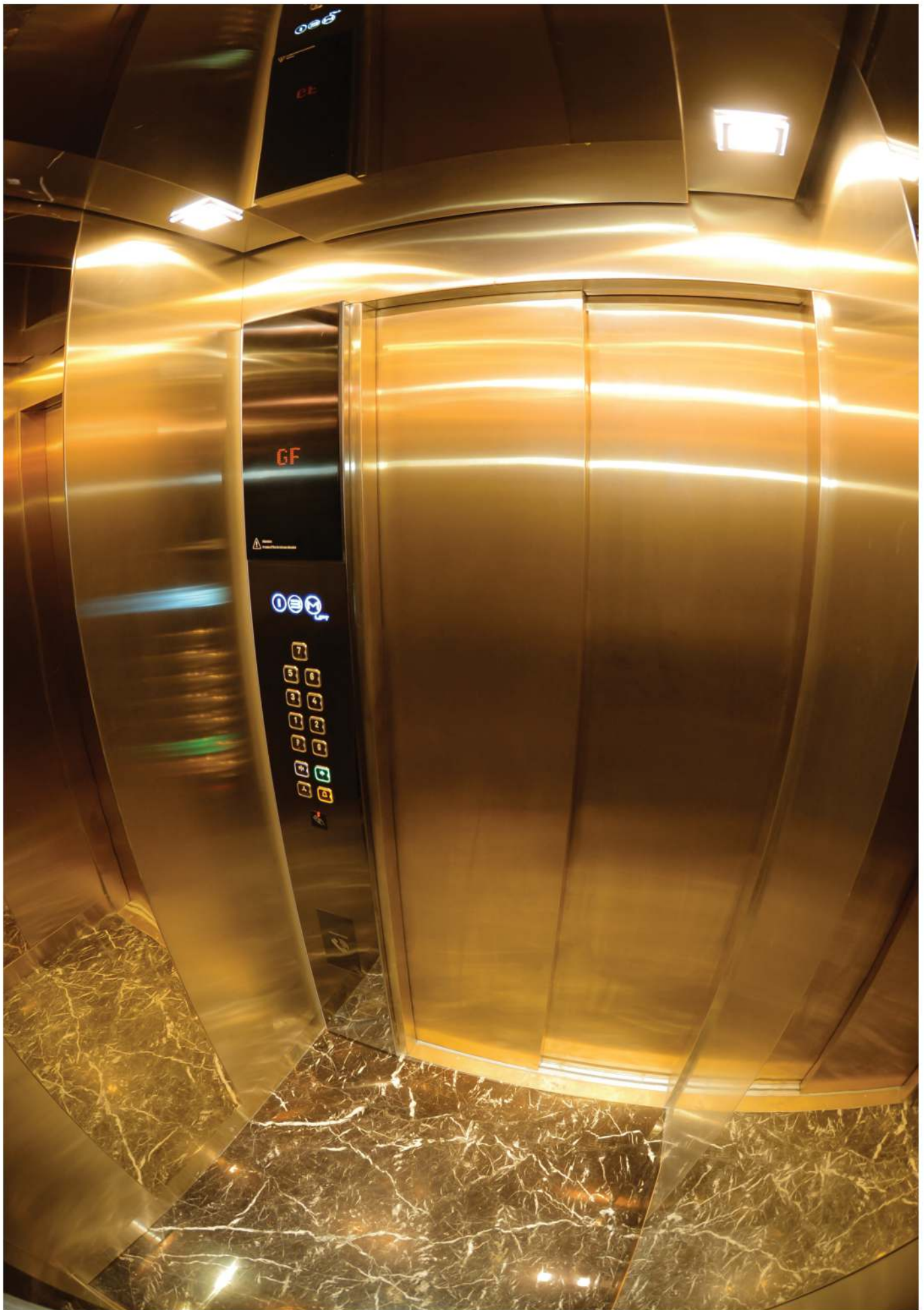


HANDLE

The use of handles in the elevator car is very important. IBM has tried to use the best and most beautiful handles for its customers.

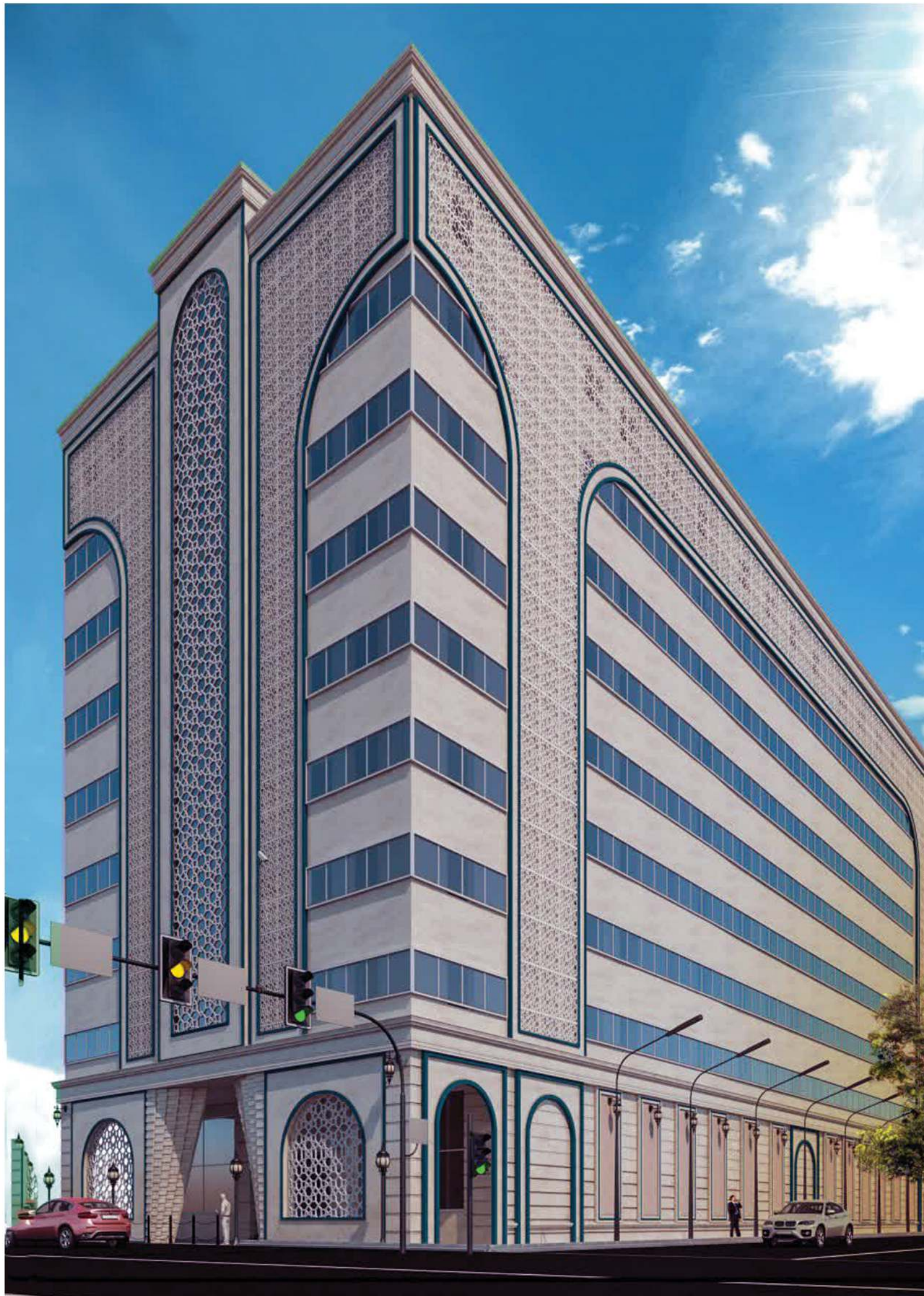


Mr.Ahmadzadeh
Banafshe St.



ATTRACTIVE AND QUALITY

The combination of stainless steel and lighting, stone and height of ibm cabins has always been attractive to customers. IBM always tries to satisfy its customers in this regard.



HOTEL FATEMIE
Navab safavi St.



CALCULATION OF TRAFFIC

Calculation and analysis of elevator traffic is one of the important topics in the design of residential, office and hotel towers.

Using the knowledge of its engineers, IBM has tried to provide accurate and flawless design to help its customers optimize their costs.





MACHINE ROOM LESS (MRL)

Flexibility in the dimensions of IBM MRL elevators is a worthy response to the needs of customers and employers. In the special design of these elevators, there is no need for machine room space. Eliminating the engine room space, while reducing building costs and optimizing the use of spaces, makes it possible for designers and architects to overcome the limitations caused by the presence of the machine room in traditional elevators.

Important features of elevators without machine room

- Special equipment design
- Use of new engineering standards
- Providing multiple and diverse solutions
- Removing the space required for the engine room and adding useful building space
- Use of drive systems without gearbox with high efficiency.
- Ability to choose from pre-designed systems.
- No need for too high a height to install the engine and accessories
- Ability to run with a height of about 4 from the last elevator station.
- No need to run emergency exit valves and exit stairs.



ATTRACTIVE TOUCH

Touch keys are always a special attraction for customers, so choosing the quality of this type of knob is always on the agenda of IBM experts. Due to the very high sensitivity of this type of key, you should try to install its parts correctly and also install them correctly. The correct operation of this key model doubles its attractiveness.



CRM

CRM stands for Customer Relationship Management and aims to best manage our customer relationship and how to respond to their needs and wants. This will make our business more and more successful.

CRM is a strategy of how to interact and actively engage with customers. Successful CRM sees the business from the customer's point of view and takes the customer experience into account in its planning. A customer perspective helps you to see the gaps and opportunities in your business and to consider more effective strategies and processes for the organization.

It should be noted that CRM is not just a software. Today, this topic is summarized as a tool that allows organizations to focus more on activities and relationships related to their customers, buyers, suppliers and partners, but in fact the concept of customer relationship management starts from the strategy layer and ends. These softwares are tools to facilitate the implementation of organizational strategies.

SUPPORT(SERVICE AND NAVIGATION)

After installing the product and standard certification news, IBM will keep your customer satisfaction at the highest level by providing up-to-date services and services at your request. IBM strives to have the highest level of customer satisfaction by continuously improving and providing optimal services by training and using experienced technical techniques and advertising.





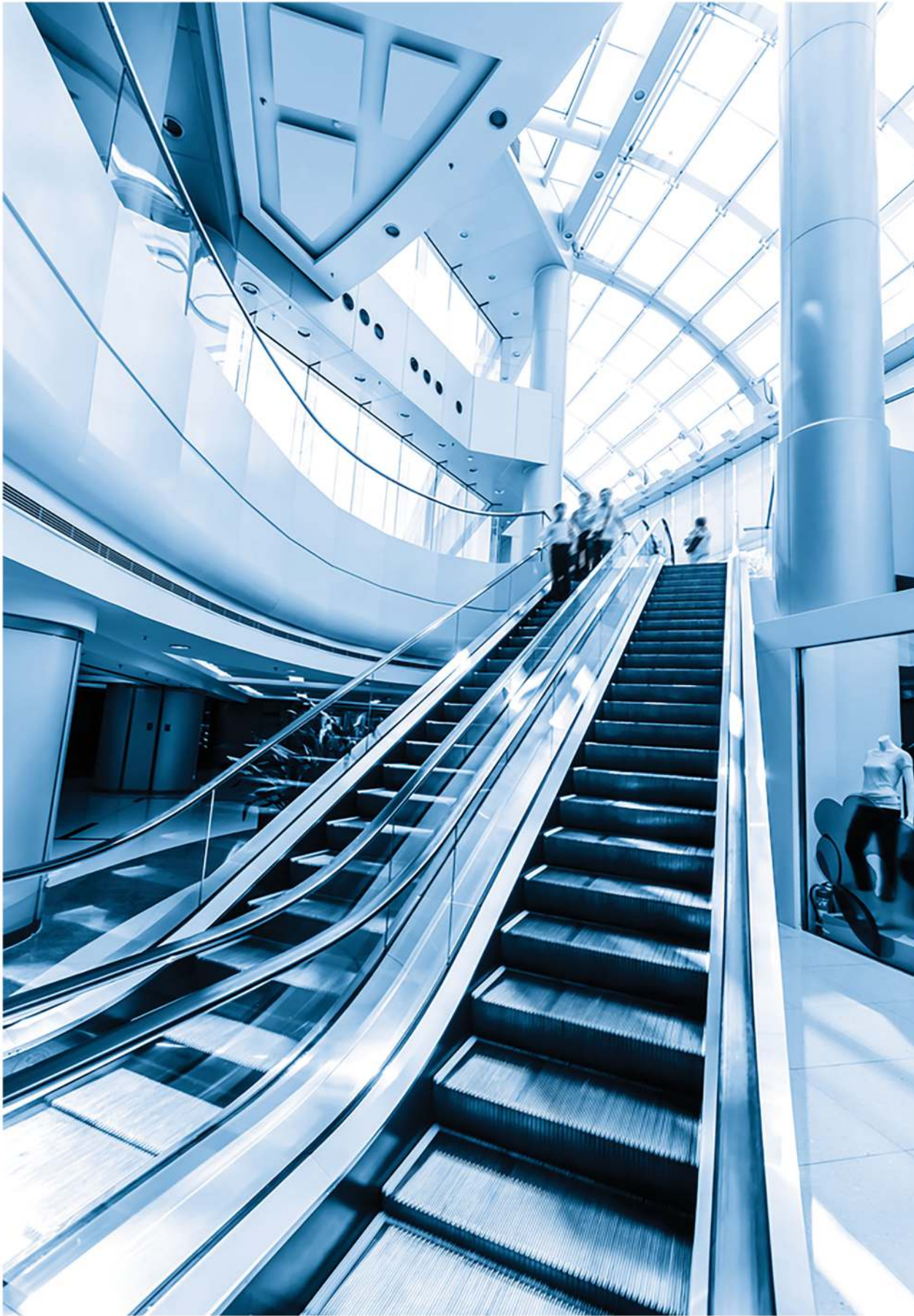
HYDRAULIC LIFTS

In this type of elevator, the driving force moves the jack with the oil pressure supplied by the power unit. The simplest form of this elevator consists of only a cylinder and a piston that is connected directly to the bottom of the cabin. When the engine is activated, it pumps the oil pump from the tank to the cylinder, and as the cylinder capacity fills, it pushes the oil, the piston and the cab upwards. When the cab reaches the desired floor, the control system signals the engine to stop pumping oil. Also, to lower the cab, the control system sends an opening command signal to the oil valve, and the weight of the cab causes the piston to push the oil into the cylinder so that the oil returns to the tank from the valve, and when the control system stops, the valve closes. Exports.



SYMBOL OF POWER

IBM has always tried to create a special effect of beauty, dignity and power in its cabins by using combinations of stainless steel sheets.



ESCALATOR

Due to the increasing growth of commercial projects and the urgent need for escalators, IBM, after careful studies and the use of experienced and experienced specialists in this regard, while identifying the top manufacturers of escalators in the world Has consulted and communicated with them. IBM is now working with these companies to meet the needs of their customers to provide the most desirable quality and take an effective step.

MOVABLE RAMPS

Movable ramps or sidewalks with a mechanism similar to escalators, have a moving surface, smooth and without stairs, which are mostly used in airports and commercial places to access long distances such as the route between terminals or different parts of commercial complexes. Make it easier. In escalators, unlike escalators, you can travel with a shopping cart or stroller.





THE OPTIMAL SOLUTION FOR [SAFE MOVEMENT](#)



